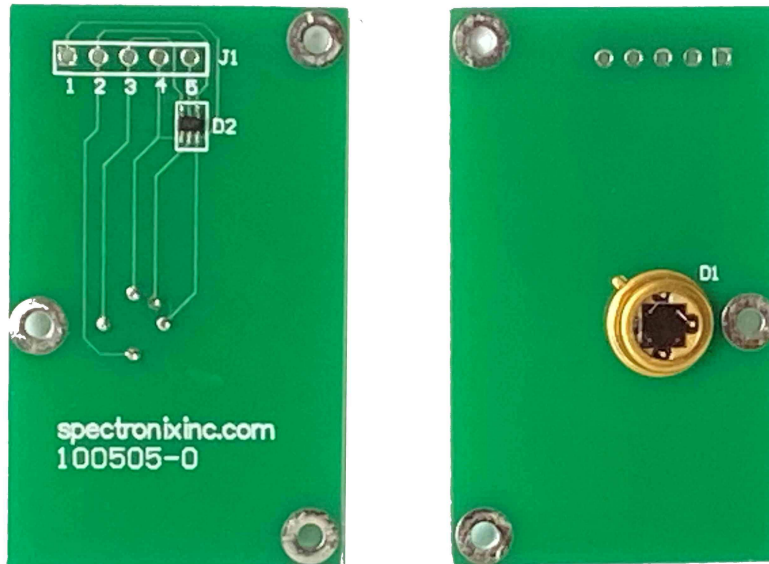


Overview:

The AOD quad cell mount CCA, pictured below, contains one SPOT-4DUV quad detector and ESD protection. The picture below shows the “normal” orientation relative to the Quad Cell Viewer software.



Connections:

The suggested connector part number and wiring for compatibility with the IAT Quad Cell Viewer (100502A) is shown below.

Pin Number	Signal	Pin Number
5	Cathode	1
4	Anode A (Q2)	2
3	Anode B (Q1)	3
2	Anode C (Q4)	4
1	Anode D (Q3)	5